

# A7075P EXTRA SUPER DURALUMIN: Configurable Plates

## A7075P フリープレート

A7075Pは、アルミ合金中、最高レベルの強度をもつ熱処理合金です。



**Delivery 出荷日**  
1~3 日目発送

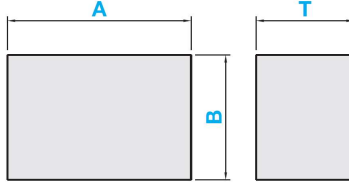
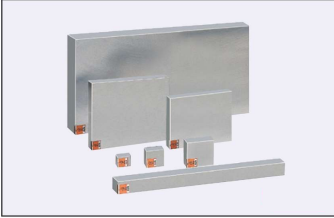


ストーク T



ストーク A

型式は寸法や数量により異なります。  
材料屋24サイトで都度お見積り下さい。  
20個以上は出荷日が異なる場合があります。



### ■面粗さ

仕上方法	仕上面	面粗さ
フライス(F)	側面	1.6a
	上下面	6.3a
サーフェイス研磨(G)	上下面	1.6a
	未仕上	保証不可

### ■主な仕上方法とサイズ範囲 仕上選択一覧はP15をご参照下さい。

仕上記号	仕上方法	A	B	T
4F	側面フライス	5~2500	5~1250	5 ~ 81
6F	6面フライス	5~2497	5~ 800	2.5~100
4F2G	サーフェイス研磨 ※側面フライス	25~ 600	10~ 300	5 ~ 50

### ■精度基準

項目	圧延	フライス(F)	サーフェイス研磨(G)	
			4側面(A-B面)	1側面(C面)
平面度 (100mmに対して)	-	-	T最小~7.99	0.05
			T8~15.99	0.03
			T16~25.99	0.015
			T26~最大	0.012
板厚平行度 (100mmに対して)	-	-	T最小~6.99	0.012
			T7~12.99	0.03
			T13~15.99	0.05
			T16~20.99	0.07
基準面直角度(100mmに対して)			4側面(A-B面)を基準面とし、0.015	

※側面仕上なしの場合、直角度・側面の面粗度の保証はしていません。

### ■出荷日一覧

サイズ条件	4F・6F	サーフェイス
300×300以下	1日目	3日目
上記以外	3日目	

### ■寸法公差(標準・精級・超精級)

プラス公差、マイナス公差へ変更できます(未仕上除く)  
例)下記表±0.1の場合、【+0.1~+0.3】【-0~+0.2】【-0.2~+0】

仕上方法	未仕上(L)	標準(N)	精級(S)	超精級(T)
切断公差	-0~+2			
フライス		±0.1	±0.05	±0.02
サーフェイス研磨		±0.05		

### ■6Fサイズ範囲詳細 その他仕上のサイズ範囲は『材料屋24金属プレート』よりご確認ください。

A	B	T	2.5~2.99	3~4.99	5~7.99	8~9.99	10~12.99	13~14.99	15~19.99	20~29.99	30~46	46.01~49.99	50~69.99	70~80
指定0.1mm単位	指定0.1mm単位	指定0.1mm単位												
5 ~ 150	5 ~ 7.99		●	●	●	●	●	●	●	●	●	●	●	●
150 ~ 600			●	●	●	●	●	●	●	●	●	●	●	●
8 ~ 150	8 ~ 9.99		●	●	●	●	●	●	●	●	●	●	●	●
150.01~600			●	●	●	●	●	●	●	●	●	●	●	●
600.01~1250			●	●	●	●	●	●	●	●	●	●	●	●
1250.01~1610			●	●	●	●	●	●	●	●	●	●	●	●
10 ~ 150	10 ~ 14.99		●	●	●	●	●	●	●	●	●	●	●	●
150.01~600			●	●	●	●	●	●	●	●	●	●	●	●
600.01~1250			●	●	●	●	●	●	●	●	●	●	●	●
1250.01~1610			●	●	●	●	●	●	●	●	●	●	●	●
15 ~ 150	15 ~ 19.99		●	●	●	●	●	●	●	●	●	●	●	●
150.01~600			●	●	●	●	●	●	●	●	●	●	●	●
600.01~1250			●	●	●	●	●	●	●	●	●	●	●	●
1250.01~1610			●	●	●	●	●	●	●	●	●	●	●	●
20 ~ 150	20 ~ 29.99		●	●	●	●	●	●	●	●	●	●	●	●
150.01~600			●	●	●	●	●	●	●	●	●	●	●	●
600.01~1250			●	●	●	●	●	●	●	●	●	●	●	●
1250.01~1610			●	●	●	●	●	●	●	●	●	●	●	●
1610.01~2457			●	●	●	●	●	●	●	●	●	●	●	●
30 ~ 150	30 ~ 49.99		●	●	●	●	●	●	●	●	●	●	●	●
150.01~600			●	●	●	●	●	●	●	●	●	●	●	●
600.01~1250			●	●	●	●	●	●	●	●	●	●	●	●
1250.01~1610			●	●	●	●	●	●	●	●	●	●	●	●
1610.01~2457			●	●	●	●	●	●	●	●	●	●	●	●
50 ~ 150	50 ~ 69.99		●	●	●	●	●	●	●	●	●	●	●	●
150.01~600			●	●	●	●	●	●	●	●	●	●	●	●
600.01~1250			●	●	●	●	●	●	●	●	●	●	●	●
1250.01~1610			●	●	●	●	●	●	●	●	●	●	●	●
1610.01~2457			●	●	●	●	●	●	●	●	●	●	●	●
70 ~ 150	70 ~ 99.99		●	●	●	●	●	●	●	●	●	●	●	●
150.01~600			●	●	●	●	●	●	●	●	●	●	●	●
600.01~1250			●	●	●	●	●	●	●	●	●	●	●	●
1250.01~1610			●	●	●	●	●	●	●	●	●	●	●	●
1610.01~2457			●	●	●	●	●	●	●	●	●	●	●	●
100.01~150	100 ~119.99		●	●	●	●	●	●	●	●	●	●	●	●
150.01~600			●	●	●	●	●	●	●	●	●	●	●	●
600.01~1250			●	●	●	●	●	●	●	●	●	●	●	●
1250.01~1610			●	●	●	●	●	●	●	●	●	●	●	●
1610.01~2457			●	●	●	●	●	●	●	●	●	●	●	●
120 ~ 150	120 ~130		●	●	●	●	●	●	●	●	●	●	●	●
150.01~600			●	●	●	●	●	●	●	●	●	●	●	●
600.01~1250			●	●	●	●	●	●	●	●	●	●	●	●
700.01~1610			●	●	●	●	●	●	●	●	●	●	●	●
1610.01~2457			●	●	●	●	●	●	●	●	●	●	●	●
130.01~150	130.01~143		●	●	●	●	●	●	●	●	●	●	●	●
150.01~600			●	●	●	●	●	●	●	●	●	●	●	●
600.01~1250			●	●	●	●	●	●	●	●	●	●	●	●
700.01~1610			●	●	●	●	●	●	●	●	●	●	●	●
143.01~400	143.01~150		●	●	●	●	●	●	●	●	●	●	●	●
400.01~700			●	●	●	●	●	●	●	●	●	●	●	●
700.01~1610			●	●	●	●	●	●	●	●	●	●	●	●
1610.01~2457			●	●	●	●	●	●	●	●	●	●	●	●
150.01~400	150.01~193		●	●	●	●	●	●	●	●	●	●	●	●
400.01~700			●	●	●	●	●	●	●	●	●	●	●	●
700.01~1610			●	●	●	●	●	●	●	●	●	●	●	●
183.01~400			●	●	●	●	●	●	●	●	●	●	●	●
400.01~600	193.01~304		●	●	●	●	●	●	●	●	●	●	●	●
600.01~1610			●	●	●	●	●	●	●	●	●	●	●	●
304.01~1000	304.01~560		●	●	●	●	●	●	●	●	●	●	●	●
1000.01~1610			●	●	●	●	●	●	●	●	●	●	●	●
560.01~1250	560.01~815		●	●	●	●	●	●	●	●	●	●	●	●
1250.01~1610			●	●	●	●	●	●	●	●	●	●	●	●

### ■全周面取り

面取り値	C0.1~C0.2	面取り無し(ピン角)	C0.3~C0.5	C0.6~C1.0	C1.1~C1.5	C1.6~C2.0
面取り記号	- (標準)	BT	CA	CB	CD	CE
可能範囲	○	○	○	○	○	○

未仕上の場合、面取りは行いません。

### ■コーナーカット

サイズ	指定0.1mm (C0.1~C1)	指定1mm (C2~C6)
全サイズ	C0.1~C60	



**サイズバリエーションに自信あり!**  
極小(5×5)・細長(1250×8)・大サイズ(1600×800)まで、欲しいサイズをご提供。  
※上記サイズはA7075P 6F例です。